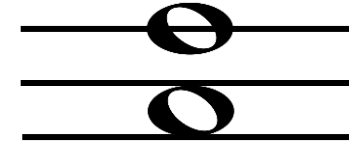


Reading notes on the Treble Clef

This is the **treble clef**. Usually your right hand plays the notes here.

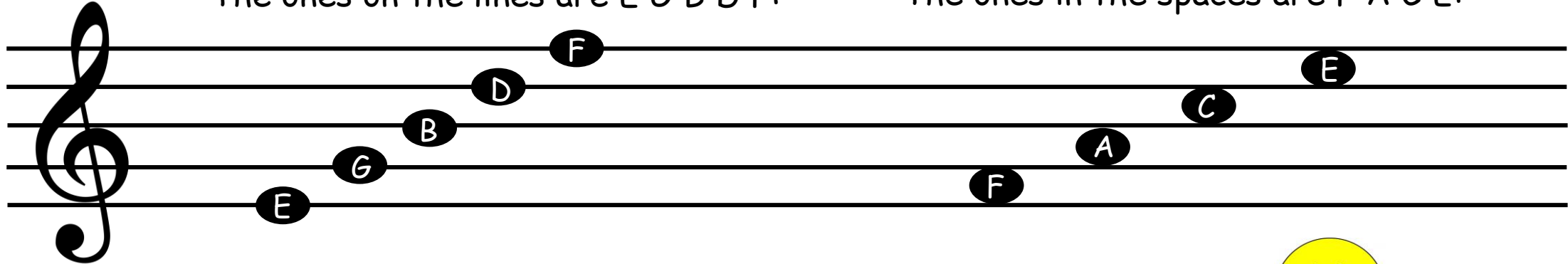
Music notes either sit on a line or between the lines.



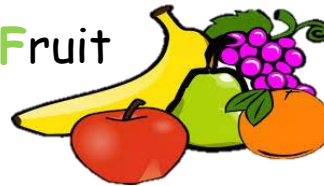
Where the note is on the lines tells you what note to play.

The ones on the lines are E G B D F:

The ones in the spaces are F A C E:



Every Good Boy Deserves Fruit

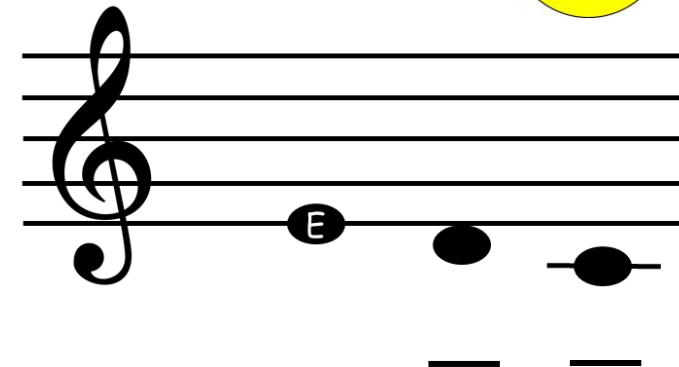


FACE



1. Write out the musical alphabet starting and ending on C

C _____ C



2. What do you think the note below E is?
What about the one below that?

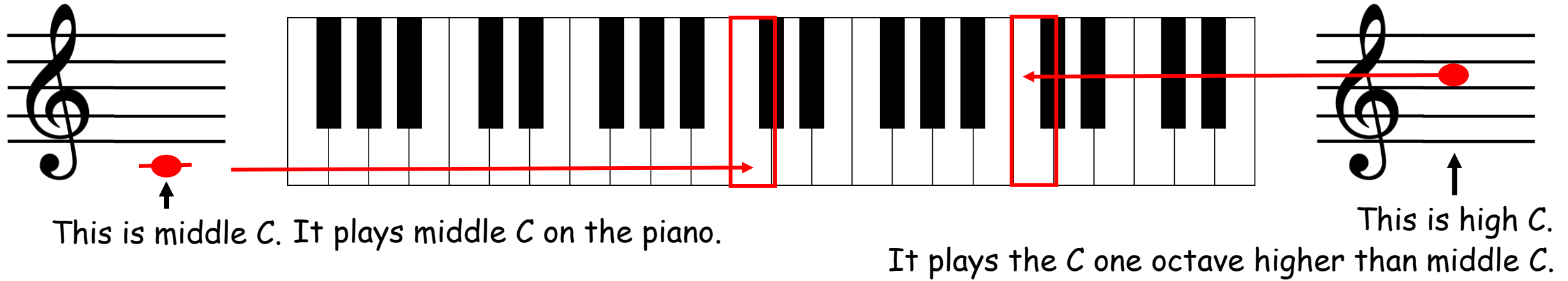
Write the name of the notes

Hint: They are all words

The image contains three musical staves, each with a treble clef. The first staff has six notes: G4 (first space), A4 (second space), B4 (third space), C5 (fourth space), D5 (fifth space), and E5 (first line). The second staff has eight notes: F4 (first space), G4 (first space), A4 (second space), B4 (third space), C5 (fourth space), D5 (fifth space), E5 (first line), and F5 (second line). The third staff has seven notes: E4 (first space), F4 (first space), G4 (first space), A4 (second space), B4 (third space), C5 (fourth space), and D5 (fifth space). Below each staff are dashed lines for writing the names of the notes.

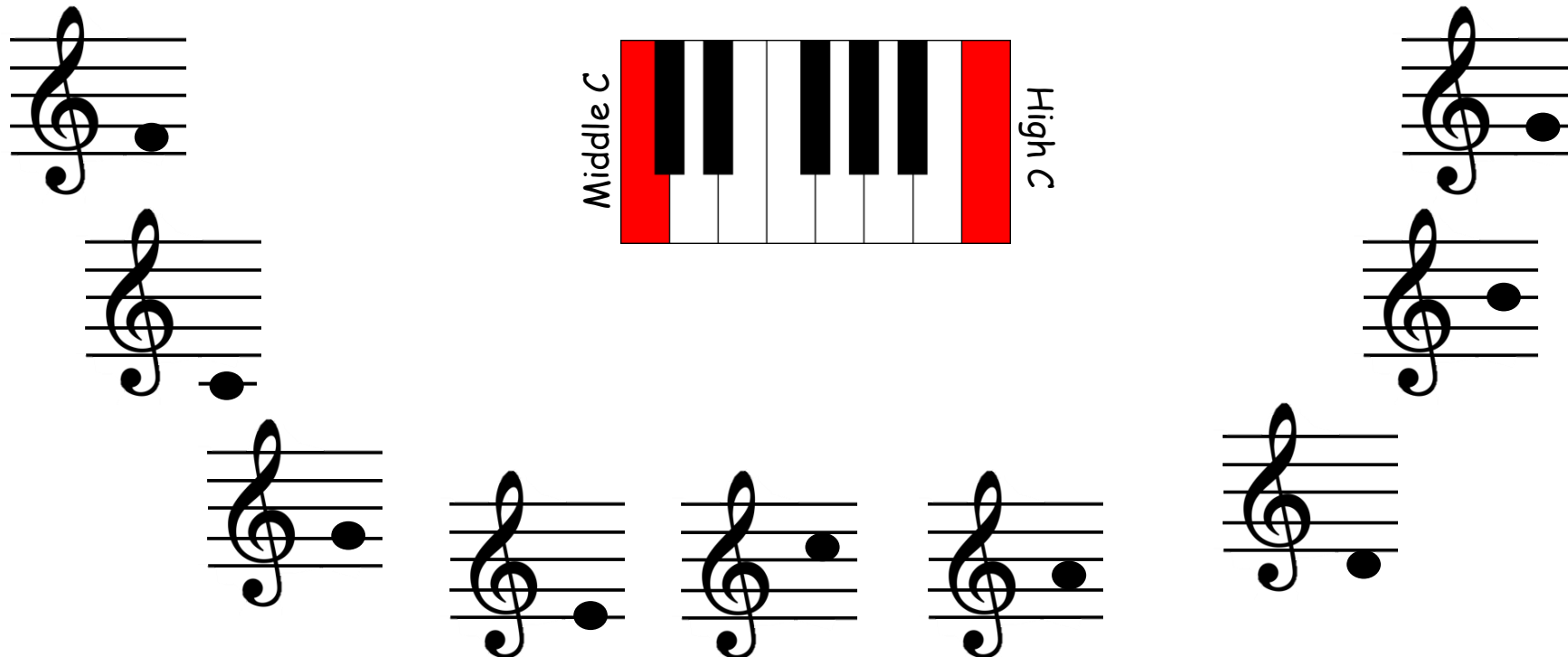
Now try write one for your teacher to solve

Match the note to the piano key



The diagram illustrates the relationship between musical notation and piano keys. On the left, a treble clef staff has a red dot on the first line, with an arrow pointing to a red dot on the piano keyboard. Below it, text reads: "This is middle C. It plays middle C on the piano." In the center, a piano keyboard is shown with two red boxes highlighting the C keys. On the right, a treble clef staff has a red dot on the second space, with an arrow pointing to the C key in the second red box on the keyboard. Below it, text reads: "This is high C. It plays the C one octave higher than middle C."

1. Draw a line from the treble clef note to the key it should play



The exercise consists of a central piano keyboard diagram with two red vertical bars on either side, labeled "Middle C" and "High C". To the left of the keyboard are three treble clef staves with notes on the first, second, and third lines. To the right are two treble clef staves with notes on the second and third spaces. Below these are five more treble clef staves with notes on the first, second, and third lines. The task is to draw lines connecting each note to its corresponding piano key.